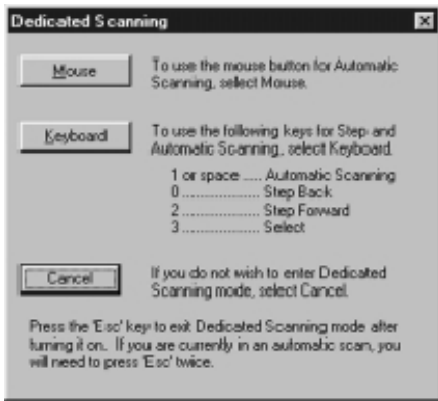


A. Find out SOFTWARE REQUIREMENTS FOR SWITCH INPUT

The first step is to take a look at what the software needs for switch input: the types of input it will respond to for one or two switches, and different types of scanning.



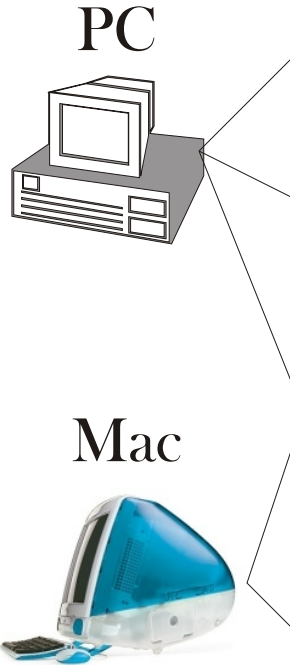
examples:

Intellitalk II: mouse button input for one switch automatic scanning; keyboard keys 0 1 2 3 for single or double switch options.

Clicker 4: keyboard keys : left and up arrow for single and two switch scanning.

Switches normally replace a

- 1.** mouse button click OR
- 2.** a keyboard key press



Serial



PS2



USB



ADB

B. Connect SWITCH INTERFACE BOX to computer

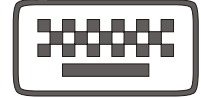
Simple, easy usb connection, no software settings, plug and play



Switch Interface from www.donjohnston.com



Switch Interface from www.donjohnston.com



keyboard

Mouse keys must be turned on (PC) to use mouse click functions on this older switch interface



Switch

Switch

C. Connect SWITCH to INTERFACE BOX