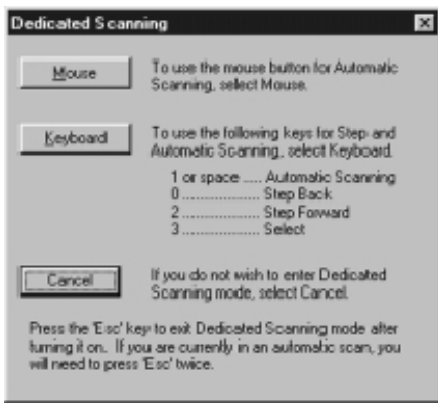
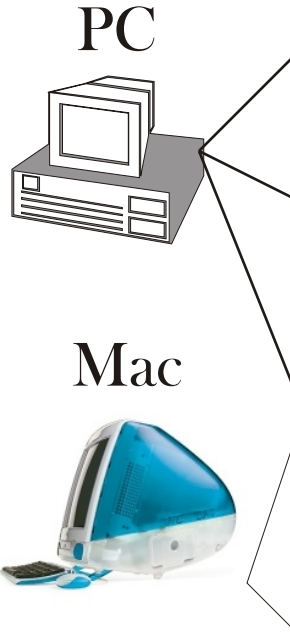


**A.** Some SOFTWARE is activated by mouse clicks (left and/or right button)

Programs such as Intellitalk II, REACH interface author and PowerPoint all function with mouse click input.



Mouse button input can take the form of 1. single switch - **DIRECT** action as in the case of a Power Point presentation - changing the slides one at a time, 2. single switch - **AUTOMATIC TIMED** scanning or 3. dual switch step scanning, when both left and right mouse button clicks are used as input.



Serial



PS2



USB



ADB

**B.** Connect SWITCH INTERFACE to computer



Examples of switch adapters which emulate mouse clicks... all VERY easy and quick to use.



Switch

**C.** Connect SWITCH to INTERFACE